



Midlothian Tpk

Huguenot Rd

Koger Ctr Blvd

 The Greater
Southport Association

Analysis of Chesterfield County Comprehensive Plan

March 2011

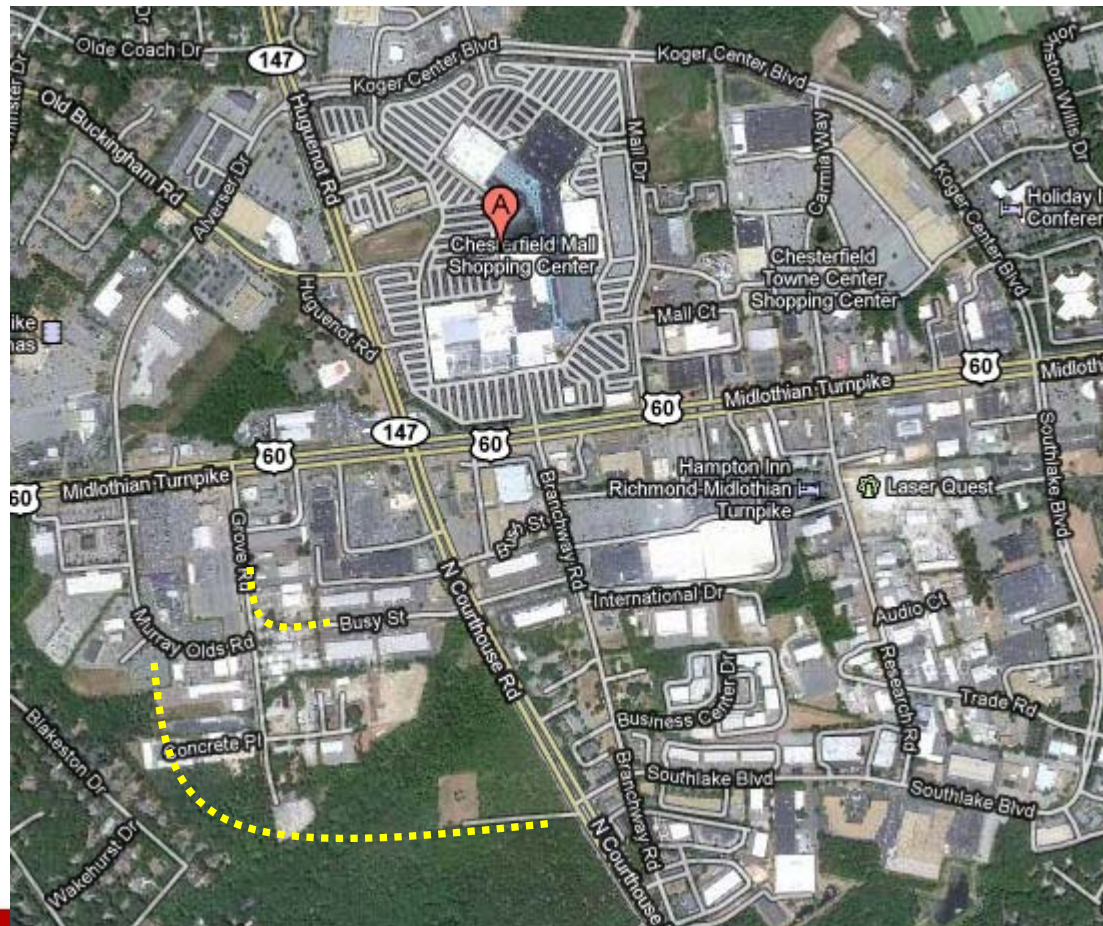
20 Year Comprehensive Plan Should...

- Provide vision for future
- Focus on Midlothian corridor to support existing core business area
- Promote inter-connectivity among businesses
- Address current transportation needs



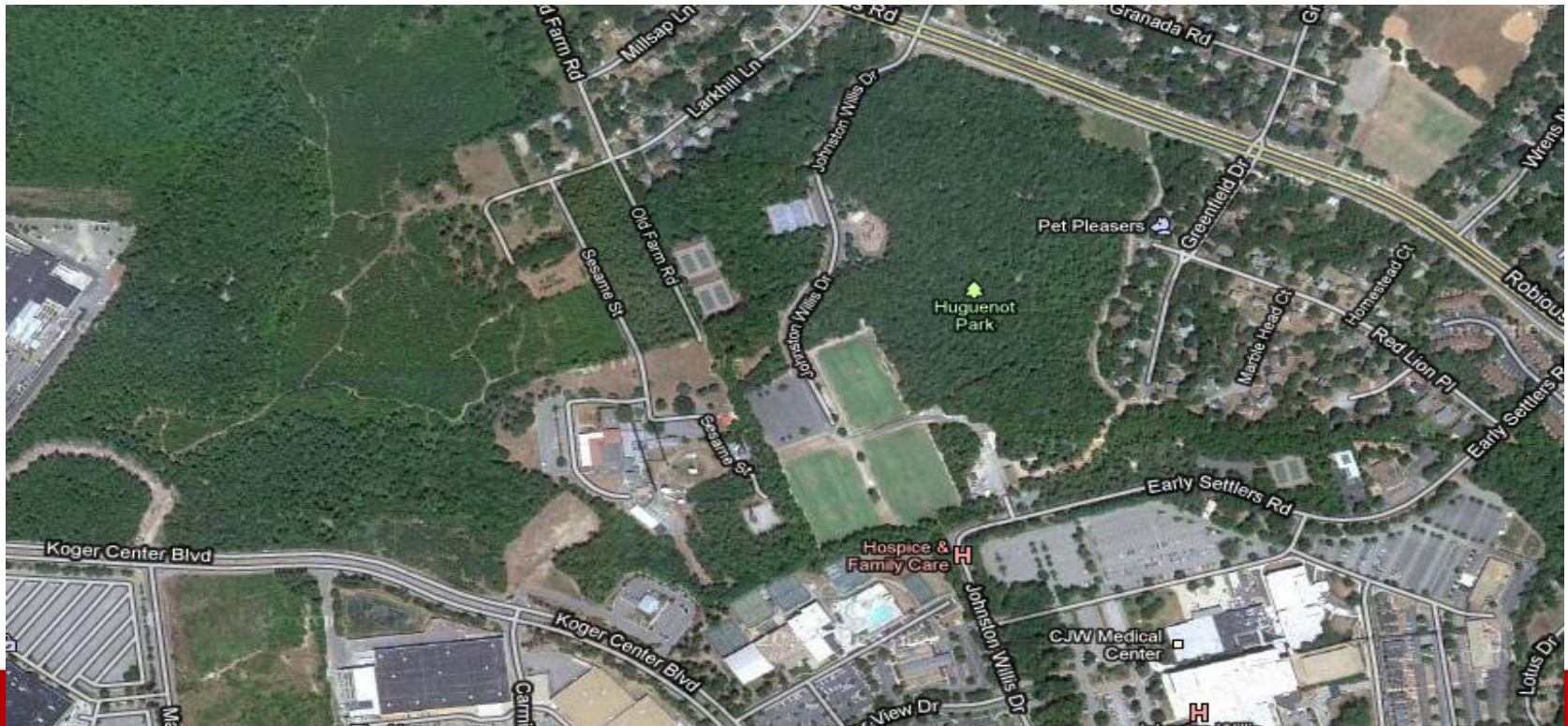
Brainstorming Opportunities

- Completion of Loop road around Chesterfield Towne Center



Brainstorming Opportunities

- Mall Drive Connection with Cranbeck at Robius Road
- Huguenot Park – Johnston Willis Drive by MAC / Johnston Willis Hospital through the park to Robious Road. Install bike paths, connect to MAC, Holiday Inn, and retail areas, addition of bike stands, aesthetically improve by moving and screening park trailers from public view.



Brainstorming Opportunities

- Install dual turn lanes throughout Midlothian Turnpike to side streets
- Connectivity between properties without going back onto Midlothian or Robious
- Install additional lanes in areas prone to bottle necking or where lanes run out
- Increase visibility on eastbound Route 60 between Walmart and Alverser Drive
- Focus on North & South travel rather than just East & West
- Seek opportunities for additional commuter locations
- Conduct traffic study including timing of lights
- Research light rail opportunities



Ideas? Comments? Suggestions?

Please complete the card at your seat and submit to the
Greater Southport Business Association table

www.SouthportAssociation.com

